

- LAND
- ↓ DOWNHOLE
- SEABED
- ≡ MARINE



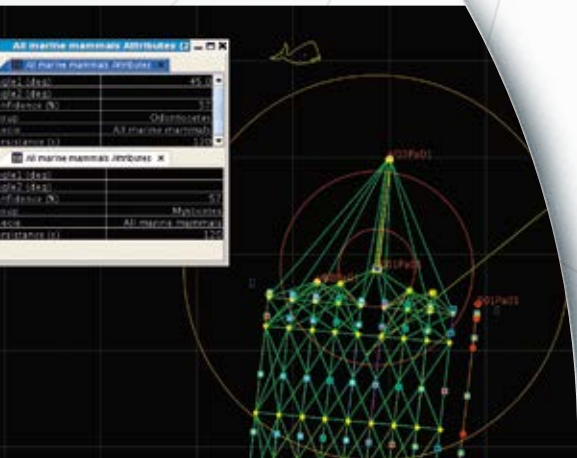
QuietSea™

Marine mammal monitoring system



Ahead of the CurveSM

Features & Benefits



// INTEGRATED ARCHITECTURE

Sensors within Sentinel® streamers
Interfacing Seal 428 & SeaPro Nav

// OPTIMIZED PRODUCTIVITY

No external devices to entangle streamer
False alarm rate reduction

// PRECISE MONITORING

Automated detection & localization algorithms
Objective decision-making



QuietSea™ is the new passive acoustic monitoring (PAM) system from Sercel designed to detect the presence of marine mammals during seismic operations.

Unlike other separate antenna PAM systems, QuietSea is seamlessly integrated within the Sercel Sentinel seismic streamer (Sentinel, Sentinel RD and Sentinel MS).

COMPATIBILITY

3D vessel



2D vessel

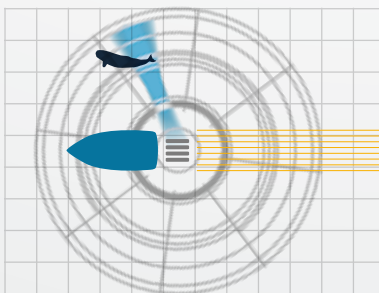


Source vessel



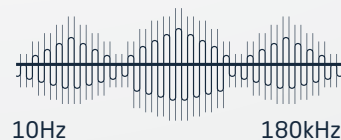
••••• Dedicated antenna for source vessel
— Seismic streamer

AUTOMATED LOCALIZATION



WIDE FREQUENCY RANGE

Whistles, moans and clicks





Onboard equipments

Localization and Low frequency detection

- QuietSea software
- Interface to Seal 428 and SeaPro Nav
- Acquisition & data processing (Streamer and Auxiliary modules)
- Data logging & localization display



Streamer module

High frequency detection

- Interfaced with positioning transducer
- A/D conversion
- Vocalization detection (200Hz to 96kHz) and timestamping
- Sensor test
- 50 or 70mm diameter
- Up to 4 modules per streamer



Auxiliary module

High frequency detection

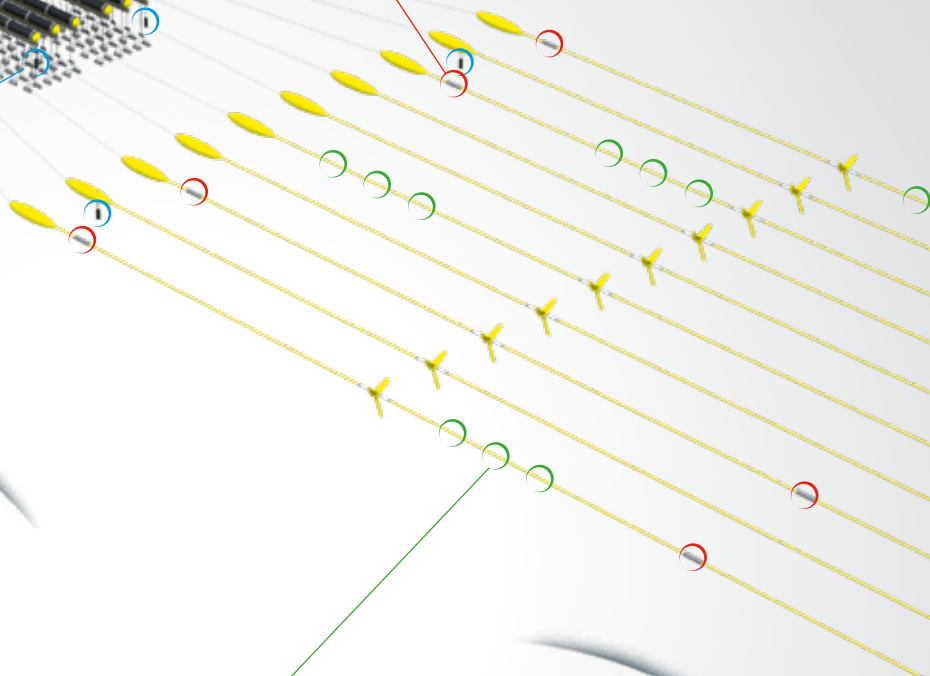
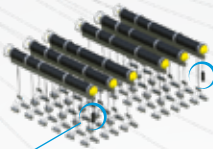
- To be mounted on the vessel hull, head buoy or gun array
- A/D conversion
- Vocalization detection (200Hz to 180kHz) and timestamping
- Sensor test
- Up to 8 modules per system



Sentinel

Low frequency detection

- Both seismic data recording and mammal monitoring
- Vocalization detection (down to 10Hz)
- Up to 512 processed channels per spread
- Sensor test





QuietSea™

Sercel - France

16 rue de Bel Air
B.P. 30439 - 44474 CARQUEFOU Cedex
Téléphone: (33) 2 40 30 11 81
Fax: (33) 2 40 30 19 48
E-mail: sales.nantes@sercel.com
SAS au capital de 2 000 000 €
Siège Social: 16 rue de Bel Air - 44470 CARQUEFOU
378.040.497 R.C.S. Nantes Code APE 2651B

Sercel Inc. - U.S.A.

17200 Park Row
Houston, Texas 77084
Telephone: (1) 281 492 6688
Fax: (1) 281 579 7505
E-mail: sales.houston@sercel.com

www.sercel.com

© Sercel 07/18

Produced according to the Sercel environmental printing standard



Ahead of the CurveSM