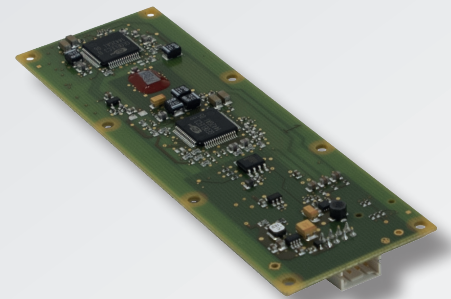
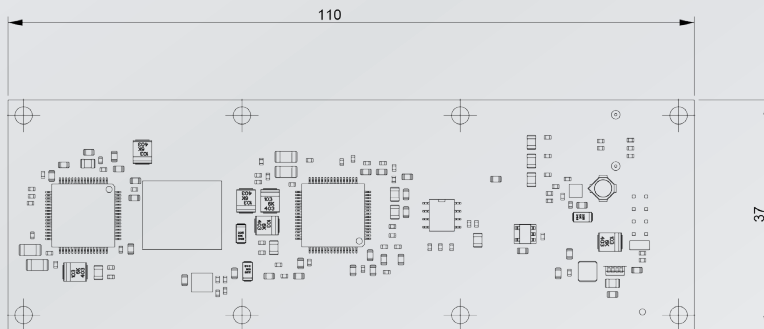
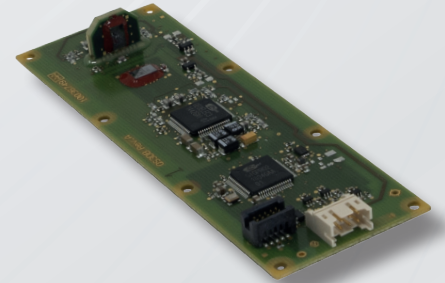
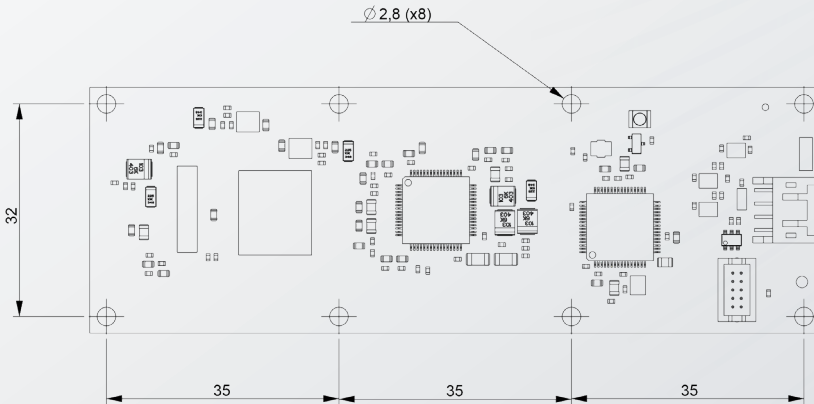


QS3 Specifications

GENERAL	
Sensor	<ul style="list-style-type: none"> • 3 Components Force balance MEMS capacitive accelerometer • Omni-tilt (gravity compensated)
Output	24 bits digital Output (UART)
Functions	<ul style="list-style-type: none"> • 3C Acceleration measurements • Data Filtering & Synchronization • Data transmission (data flow control) • Instruments tests : gain, phase, distortion • Sensor tests : noise, distortion, tilt, gravity
Sample rate	4, 2, 1, 0.5 ms disciplined output on Pulse-Per-Second (PPS)
Low cut Filter	None, 0.15625 Hz, 0.3125 Hz, 0.625 Hz, 1.25 Hz, 2.5 Hz
Bandwidth	0-800 Hz
Full scale	5 m/s ²
Noise (10-200Hz)	15 ng/√Hz
System dynamic range	128 dB
Distortion	-90dB
Tilt accuracy	±0.5° typ. (20°C)
Orthogonality	±0.25°
Gain accuracy	<0.25%
Phase accuracy	<20μs
Power supply	3.7-5.5Vdc
Power consumption	< 100 mW
Selectable I/O Bank Voltage	1.8-Vdc, 2.5-Vdc, 3.3-Vdc
Weight	< 20 g
Dimension (LxWxD)	110 x 37 x 15 mm
Operating temperature	-40°C to 70°C

Note: Sercel reserves the right to change its specifications without prior notice. All specifications are typical at 20°C



Sercel - France

16 rue de Bel Air
B.P. 30439 - 44474 CARQUEFOU Cedex

Téléphone: (33) 2 40 30 11 81

Fax: (33) 2 40 30 19 48

E-mail: sales.nantes@sercel.com

SAS au capital de 2 000 000 €

Siège Social: 16 rue de Bel Air - 44470 CARQUEFOU
378.040.497 R.C.S. Nantes Code APE 2651B

Sercel Inc. - U.S.A.

17200 Park Row
Houston, Texas 77084

Telephone: (1) 281 492 6688

Fax: (1) 281 579 7505

E-mail: sales.houston@sercel.com

www.sercel.com

© Sercel 03/19



Ahead of the CurveSM