



SERCEL

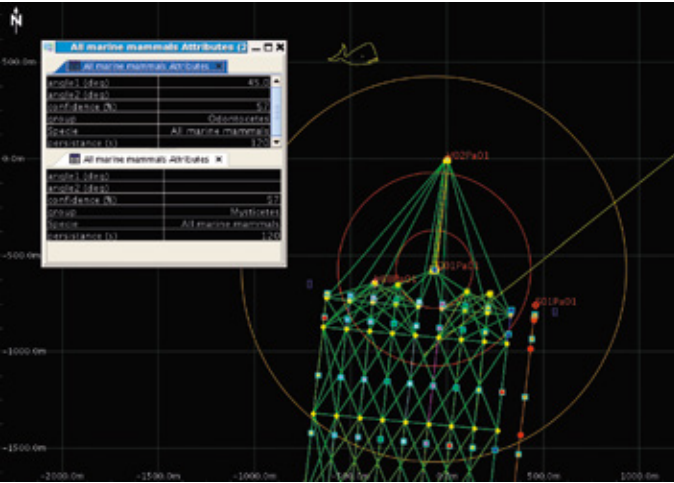
A Viridien Business



QuietSea™

PASSIVE ACOUSTIC MONITORING SYSTEM

FEATURES & BENEFITS



- INTEGRATED ARCHITECTURE**
 Sensors within Sentinel® streamers
 Interfacing Seal 428 & SeaPro Nav
- OPTIMIZED PRODUCTIVITY**
 No external devices to entangle streamer
 False alarm rate reduction
- PRECISE MONITORING**
 Automated detection & localization algorithms
 Objective decision-making

QuietSea™ is the new passive acoustic monitoring (PAM) system from Sercel designed to detect the presence of marine mammals during seismic operations.

Unlike other separate antenna PAM systems, QuietSea is seamlessly integrated within the Sercel Sentinel seismic streamer (Sentinel, Sentinel RD and Sentinel MS).

COMPATIBILITY

3D vessel



2D vessel

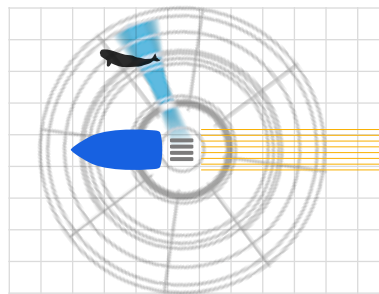


Source vessel



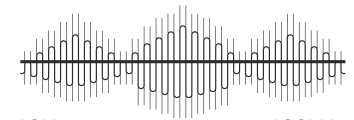
● --- Dedicated antenna for source vessel
— Seismic streamer

AUTOMATED LOCALIZATION



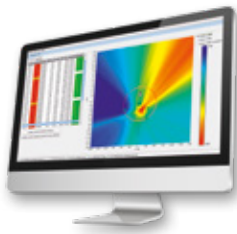
WIDE FREQUENCY RANGE

Whistles, moans and clicks



10Hz

180kHz



Onboard equipments

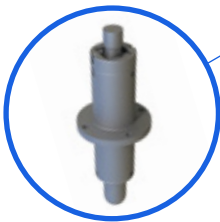
Localization and Low frequency detection

- QuietSea software
- Interface to Seal 428 and SeaPro Nav
- Acquisition & data processing (Streamer and Auxiliary modules)
- Data logging & localization display

Streamer module

High frequency detection

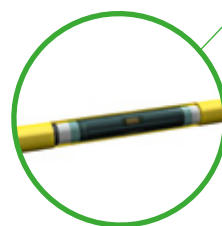
- Interfaced with positioning transducer
- A/D conversion
- Vocalization detection (200Hz to 96kHz) and timestamping
- Sensor test
- 50 or 70mm diameter
- Up to 4 modules per streamer



Auxiliary module

High frequency detection

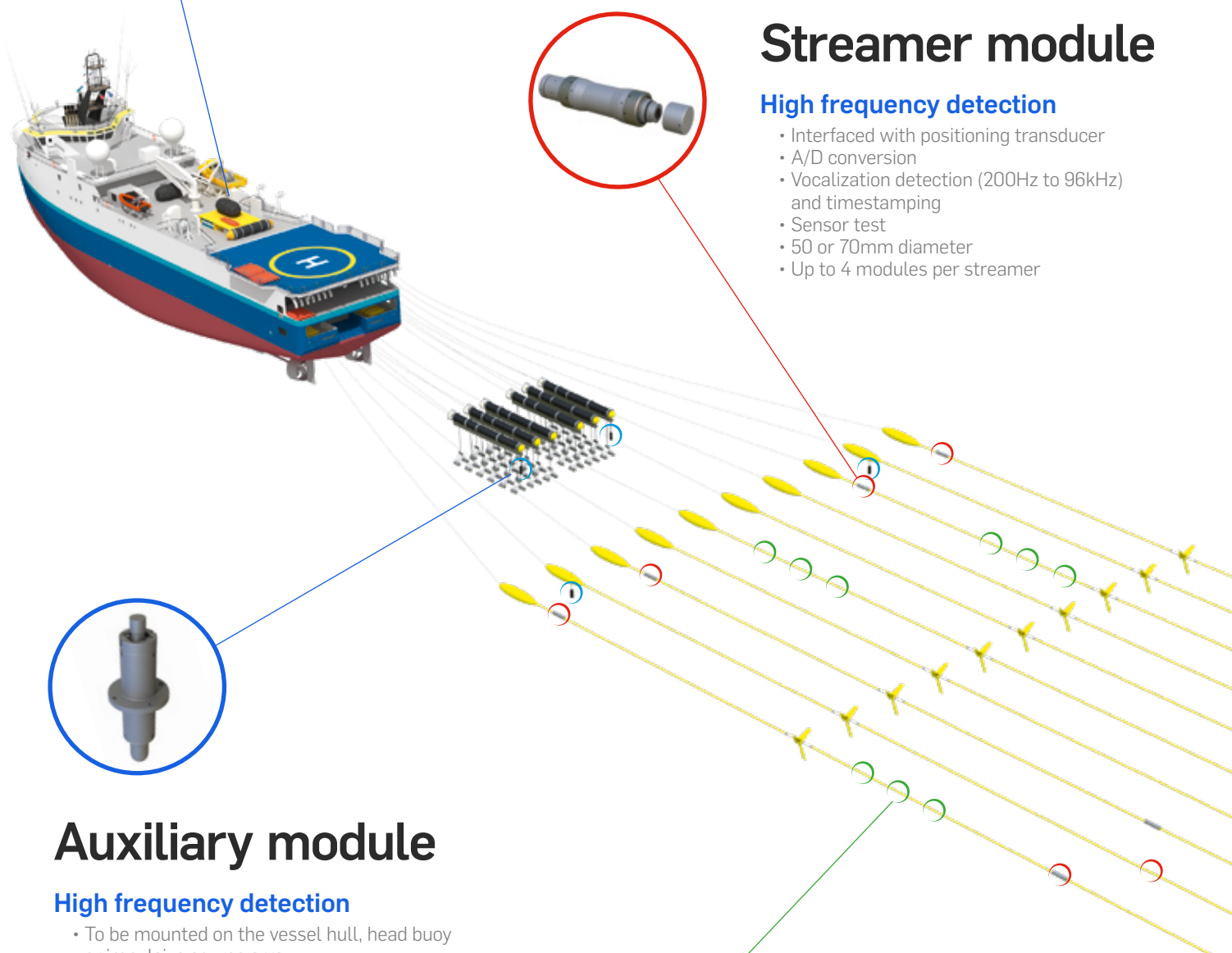
- To be mounted on the vessel hull, head buoy or impulsive source array
- A/D conversion
- Vocalization detection (200Hz to 180kHz) and timestamping
- Sensor test
- Up to 8 modules per system



Sentinel

Low frequency detection

- Both seismic data recording and mammal monitoring
- Vocalization detection (down to 10Hz)
- Up to 512 processed channels per spread
- Sensor test



SERCEL - FRANCE

16 rue de Bel Air
B.P. 30439 - 44474 CARQUEFOU Cedex
Téléphone : (33) 2 40 30 11 81
E-mail : sales.nantes@sercel.com
SAS au capital de 25 000 000 €
Siège Social : 16 rue de Bel Air - 44470 CARQUEFOU
378.040.497 R.C.S. Nantes Code APE 2651B

SERCEL INC. - U.S.A.

17200 Park Row
Houston, Texas 77084
Telephone : (1) 281 492 6688
E-mail : sales.houston@sercel.com

www.sercel.com

© Sercel 06/24

Produced according to the Sercel environmental printing standard

