



**SERCEL**  
A Viridien Business



# Accel

WORLD'S FIRST DROP NODE

# Accel

## Accelerate your operations

### The Drop Deployment

Drop. Connect. Collect.

- > **No digging, no planting:**  
Instant deployment on all terrains.
- > **Faster operations:**  
Reduced deployment and recovery time.
- > **Up to 30% OPEX reduction\*:**  
Fewer personnel and vehicles required.

\*Based on internal simulations



### Key Performance Metrics

## 2x

more compact than  
industry average nodes



## 2.5h

full charge

Up to

## 50%

reduction in CO<sub>2</sub> emissions  
and diesel consumption

Up to

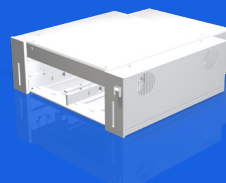
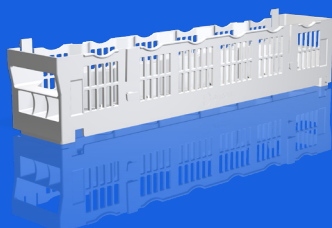
## 50%

lighter than competition  
average

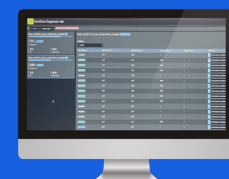
### The Integrated Ecosystem

More than a node, a complete solution to accelerate your operations.

- > **Smart BackPack:**  
Ergonomic, field-ready transport  
of up to 36 nodes.
- > **Smart Node Basket:**  
Storage of 12 nodes per basket.



- > **Rack Module:**  
Fast charge & download modular  
and stackable design (48 nodes).
- > **Smart Software Suite:**  
Streamlined data processing  
and faster consolidation.





# Smarter & Safer Field Operations

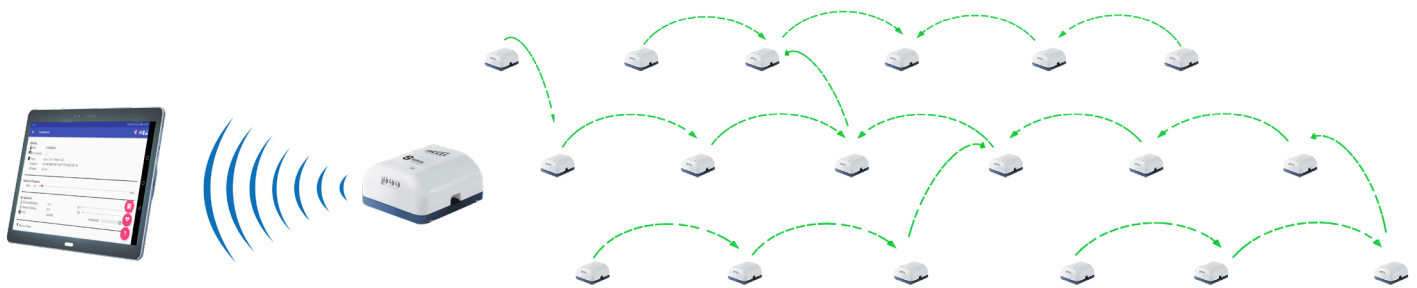
## > Pathfinder QC status:

- Node QC status in near real-time.
- 40m nominal communication range between nodes.
- No additional equipment required (such as extra antennas or drones).

## > HSE & environmental impact reduction:

- Divided by 2\*: Diesel consumption, CO<sub>2</sub> emissions, and water usage compared to main competition.
- Fewer field injuries thanks to reduced bending/lifting.
- Smaller operational footprint with fewer vehicles and personnel.

\*Based on internal simulations compared to the main competition



# Data Fidelity & Quality

The QuietSeis® Digital Broadband Sensor

## > True amplitude & phase:

Distortion-free data recording for better image quality.

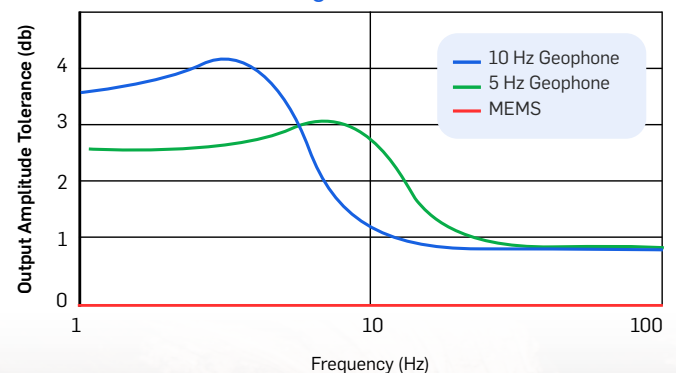
## > Insensitive to environment:

Unaffected by temperature, ageing or tilting.

## > Key sensor metrics:

- Distortion: -90dB (vs. -62dB for geophones)
- Noise floor: 15 ng/√Hz

The clearest signal. The cleanest data.



#### **SERCEL - FRANCE**

16 rue de Bel Air  
B.P. 30439 - 44474 CARQUEFOU Cedex  
Téléphone : (33) 2 40 30 11 81  
E-mail : [sales.nantes@sercel.com](mailto:sales.nantes@sercel.com)  
SAS au capital de 25 000 000 €  
Siège Social : 16 rue de Bel Air - 44470 CARQUEFOU  
378.040.497 R.C.S. Nantes Code APE 2651B

#### **SERCEL INC. - U.S.A.**

17300 Park Row  
Houston, Texas 77084  
Telephone : (1) 281 492 6688  
E-mail : [sales.houston@sercel.com](mailto:sales.houston@sercel.com)

[www.sercel.com](http://www.sercel.com)

© Sercel 10/25

Produced according to the Sercel environmental printing standard

