



SERCEL
A Viridien Business



Accel

WORLD'S FIRST DROP NODE

Accel

Accelerate your operations

The Drop Deployment

Drop. Connect. Collect.

- > **No digging, no planting:**
Instant deployment on all terrains.
- > **Faster operations:**
Reduced deployment and recovery time.
- > **Up to 30% OPEX reduction*:**
Fewer personnel and vehicles required.

*Based on internal simulations



Key Performance Metrics

2x

more compact than industry average nodes



2.5h

Typical charge

Up to

50%

reduction in CO₂ emissions and diesel consumption

Up to

50%

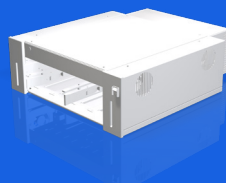
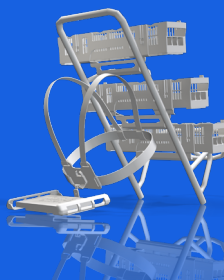
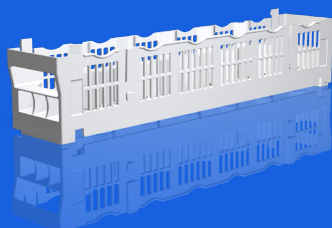
lighter than competition average

The Integrated Ecosystem

More than a node, a complete solution to accelerate your operations.

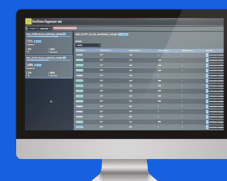
- > **Smart BackPack:**
Ergonomic, field-ready transport of up to 36 nodes.

- > **Smart Node Basket:**
Storage of 12 nodes per basket.



- > **Rack Module:**
Fast charge & download modular and stackable design (48 nodes).

- > **Smart Software Suite:**
Streamlined data processing and faster consolidation.



Smarter & Safer Field Operations

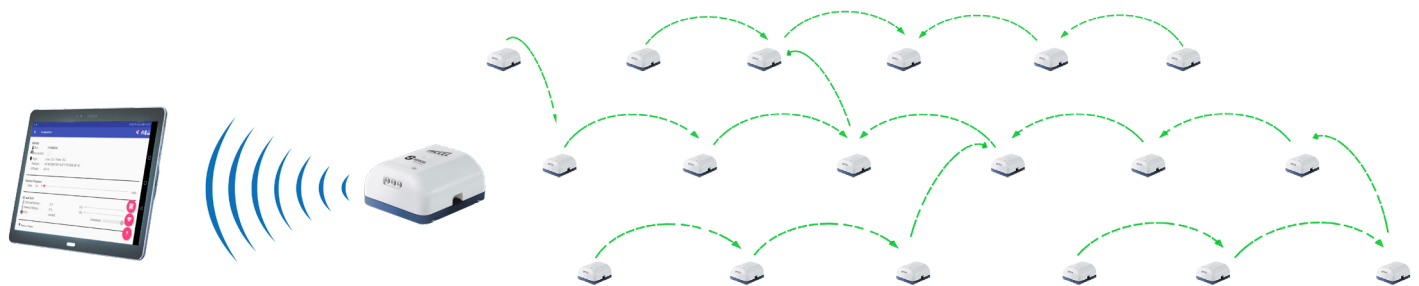
> Pathfinder QC status:

- Node QC status in near real-time.
- 40m nominal communication range between nodes.
- No additional equipment required (such as extra antennas or drones).

> HSE & environmental impact reduction:

- Divided by 2*: Diesel consumption, CO₂ emissions, and water usage compared to main competition.
- Fewer field injuries thanks to reduced bending/lifting.
- Smaller operational footprint with fewer vehicles and personnel.

*Based on internal simulations compared to the main competition



Data Fidelity & Quality

The QuietSeis® Digital Broadband Sensor

> True amplitude & phase:

Distortion-free data recording for better image quality.

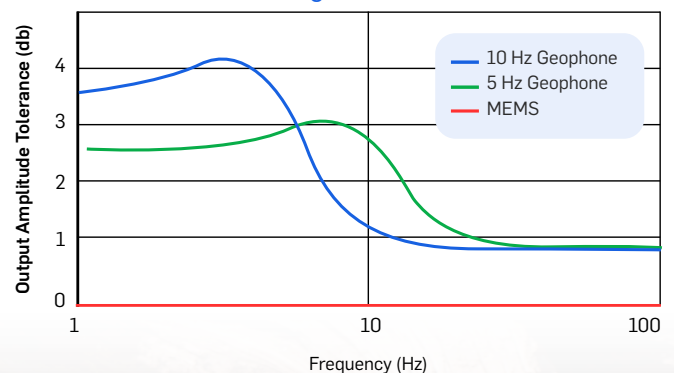
> Insensitive to environment:

Unaffected by temperature, ageing or tilting.

> Key sensor metrics:

- Distortion: -90dB (vs. -62dB for geophones)
- Noise floor: 15 ng/√Hz

The clearest signal. The cleanest data.



SERCEL - FRANCE

16 rue de Bel Air
B.P. 30439 - 44474 CARQUEFOU Cedex
Téléphone : (33) 2 40 30 11 81
E-mail : sales.nantes@sercel.com
SAS au capital de 25 000 000 €
Siège Social : 16 rue de Bel Air - 44470 CARQUEFOU
378.040.497 R.C.S. Nantes Code APE 2651B

SERCEL INC. - U.S.A.

17300 Park Row
Houston, Texas 77084
Telephone : (1) 281 492 6688
E-mail : sales.houston@sercel.com

www.sercel.com

© Sercel 10/25

Produced according to the Sercel environmental printing standard

