

# ACCEL

Accelerate your operations

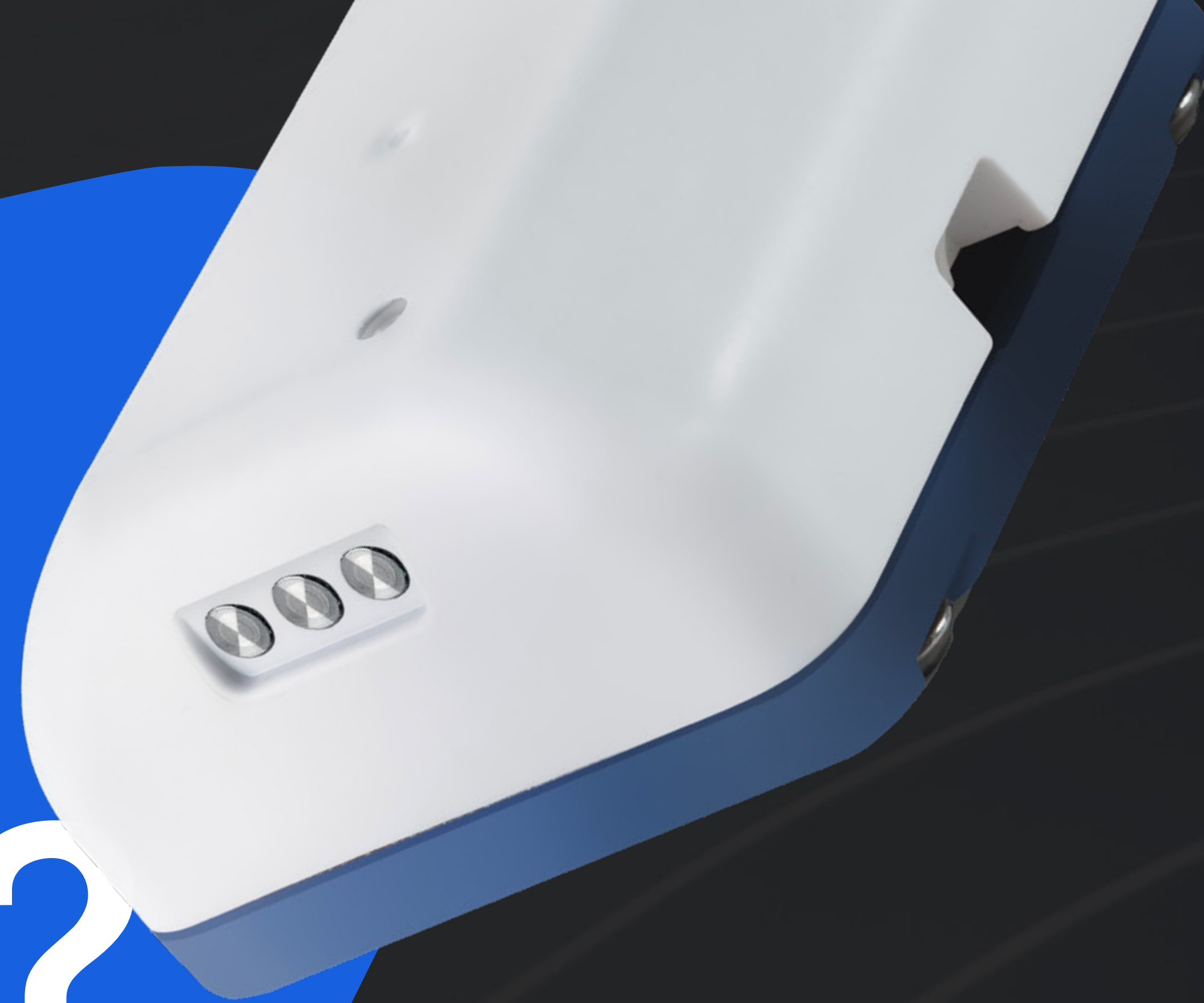
e-Guide



# Welcome to a New Nodal Experience

Why is Accel a

# game changer?



# Rethinking the Land Node

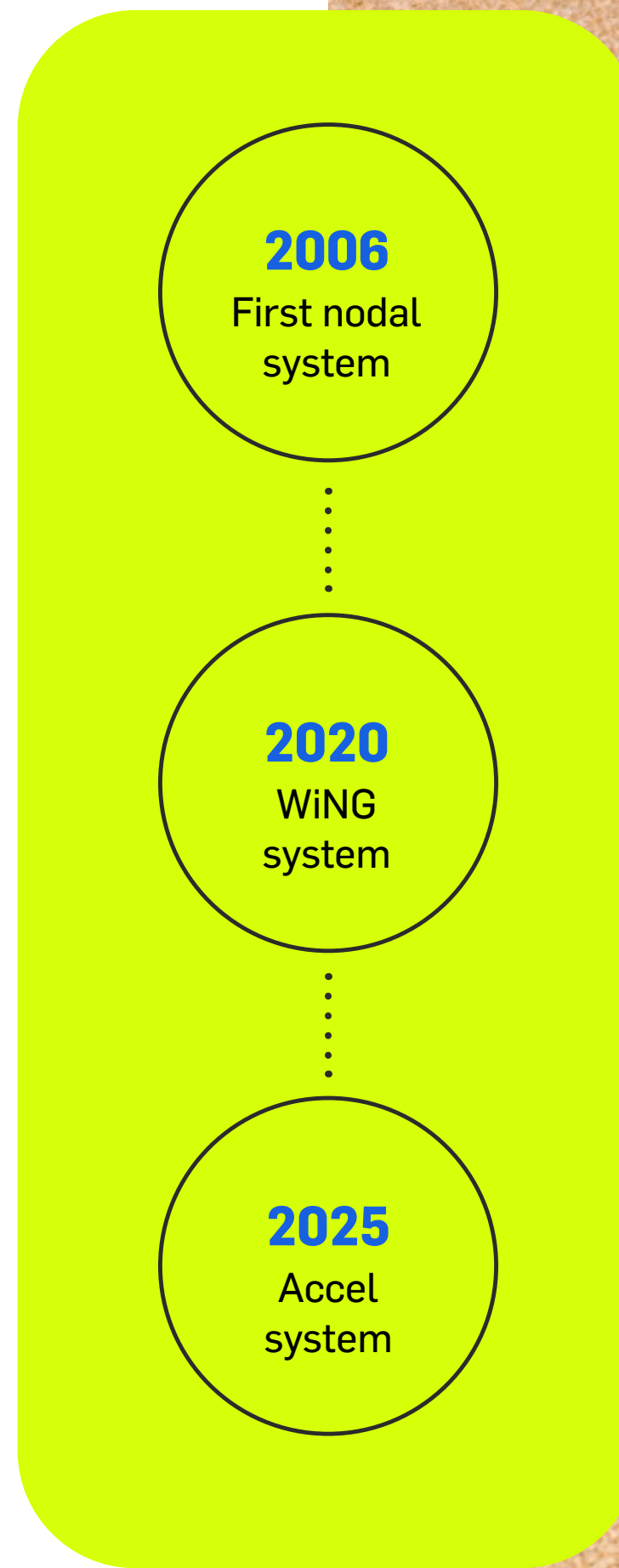
The market is evolving. Field operations demand more agility, improved operational efficiency, and higher data integrity — even in the most remote environments. In 2020, Sercel responded with WING, which was a success in various applications like Oil & Gas, Geothermal, CCUS and in diverse fields (urban, jungle, desert, mountain and transition zones).

In 2025, **we take seismic innovation to the next level** with Accel.

Driven by customer insight and 60+ years of seismic expertise, Accel was developed to meet growing industry demands, especially in desert areas and high productivity surveys:

- ▶ **Faster deployment**
- ▶ **Reduced operational costs**
- ▶ **Smaller environmental footprint**
- ▶ **Superior image quality**

**Accel is the future of nodal seismic – available now.**



# Values



# Meet Accel More than a Node

## Introducing the world's first Drop node - a breakthrough in land seismic.

Accel's design is both **robust and exceptionally compact**, allowing deployment in the most challenging fields with unprecedented speed. No digging, no planting, no tools, just pure efficiency.

From transport to installation to data processing, every step has been reengineered to **eliminate downtime, reduce crew size, and boost operational speed.**

Accel is not just a device. It's an **ecosystem** — combining compact hardware, next-gen software, and full-service support to create a seamless, smarter workflow for seismic teams everywhere.

We have defined the **most client-centric** approach nodal solution in the market with **tailored services** along your **project's lifecycle.**



**Drop.  
Connect.  
Collect.**

Small in size

# Big on performance



Accel gives you more flexibility,  
fewer constraints, and a new way  
to operate — faster, smarter,  
and at a lower cost.

# Beyond the Node: an Integrated Ecosystem

Accel is more than a node — it's a complete operational ecosystem designed to boost efficiency across your entire seismic survey.

**Every component is engineered to save time, reduce costs, and empower crews to perform at their best.**

Accel benefits from Sercel's proven experience in high-quality, reliable data management. With Accel, battery recharging and data retrieval at the rack level are optimized - ensuring fast, risk-free data recovery and complete peace of mind.

## Ergonomics package



### Rack Module

Fast charge & download  
Modular and stackable design  
(48 nodes)



### Smart BackPack

Ergonomic, field-ready  
transport of up to 36 nodes



### Smart Node Basket

Storage of 12 nodes per basket



### Smart Software Suite

Streamlined data processing  
and faster consolidation

# Services and Support all along your Project Phases

## Expertise that is with you in the field.

Our end-to-end services include:

- **MetaBlue Consulting & Project Optimization**
- **Training & Upskilling**  
From launch to advanced field operations
- **Asset Optimization**  
Maximize uptime, reliability and lifetime value
- **Operational Excellence**  
From survey planning to real-time KPI tracking :  
productivity dashboard, vibropath optimization,  
Vibrator Auto-Guidance, advanced vibroseis  
techniques, XDSS
- **Customer Support 24/7**

**60+**  
years of field-proven  
expertise

**Global  
network**  
of support centers

**Data  
quality**  
industry benchmark

**Break silos.  
Connect data.  
Perform better.**

MetaBlue brings full  
visibility across every phase  
of your seismic operation.

# Benefits



# Designed to Increase Operational Performance

Small, Smart & Powerful: Game-changing.

**2x**

more compact  
than competition average

Up to

**50%**

lighter than  
competition average

**2.5h**

Typical charge



**Less volume,  
more performance.**

**This is the smart seismic  
solution you've been waiting for.**

Accel is up to 2x more compact than  
market-leading nodes — with none of  
the trade-offs.

By reducing volume, weight, and  
complexity, Accel lowers your OPEX  
while boosting operational agility. Deploy  
more with fewer people and vehicles.

Transport faster. Recover faster.

Accel stands out as the most  
efficient node in its class.

# The Drop Deployment

The fastest node deployment method. Ever.

Up to

**30%**

OPEX costs  
reduction\*

\*Based on internal simulations

**Now you just drop,  
connect and collect.**

Thanks to its compact design, Accel can be deployed by simply dropping it on the ground. No need to dig or plant — it works on all terrains.

Accel is the first seismic node that truly fits the pace of modern exploration.

# QuietSeis<sup>®</sup> Broadband Digital Sensor

Next-level clarity with QuietSeis.

**The characteristics of Sercel's QuietSeis MEMS are a key enabler to Accel's drop node concept.**

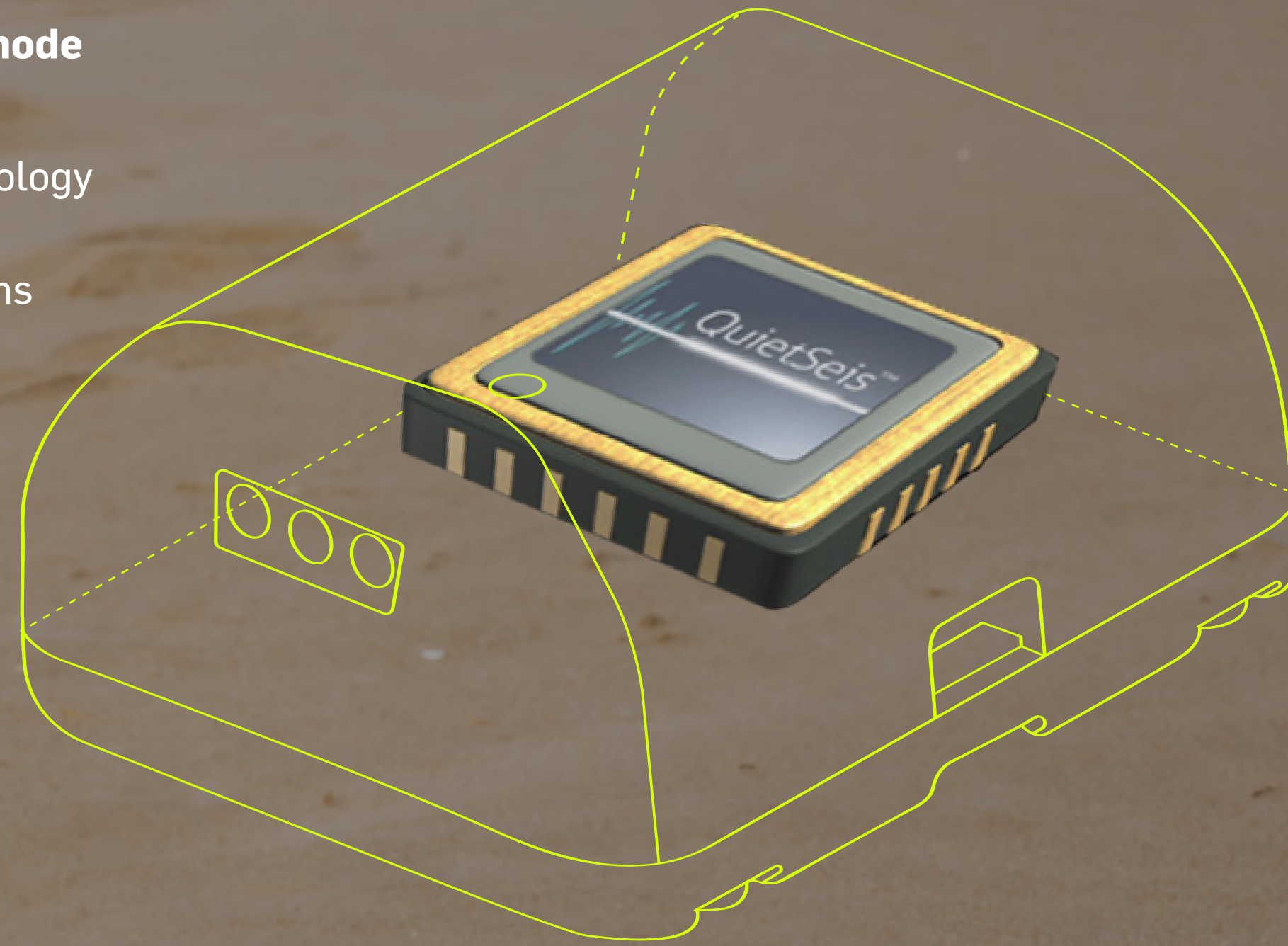
The signal measured by geophones (a technology that dates back to the 1930s) is affected by their intrinsic construction, with specifications (sensitivity, natural frequency and damping) dependent on:

- Manufacturing tolerances
- Sensor ageing
- Temperature

By design, the QuietSeis MEMS-based accelerometer is not affected by this data jitter phenomenon.

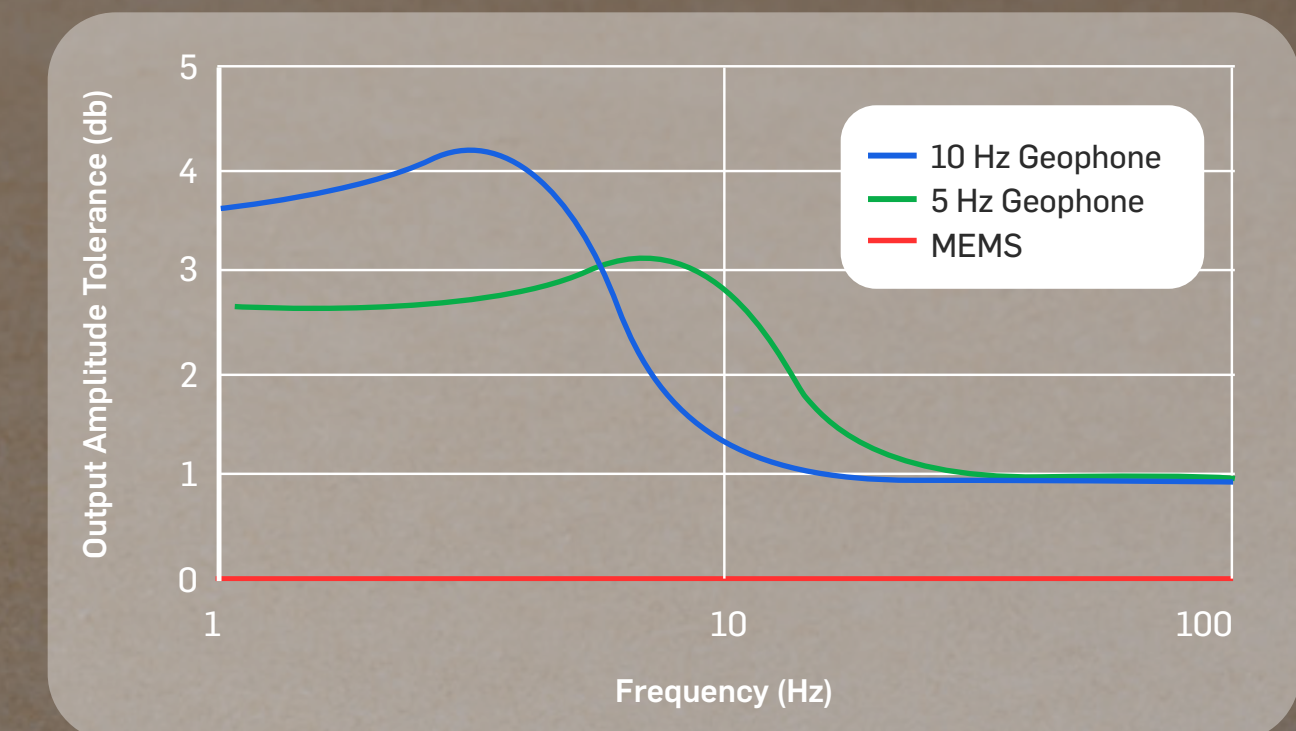
## KEY VALUES

- Tilt detection
- QuietSeis MEMS sense the gravity vector
- Digital fidelity
- True amplitudes and phases are recorded
- Manufacturing tolerances are negligible
- Insensitivity to temperature change and ageing
- Insensitivity to electromagnetic noise
- Distortion: -90dB vs. -62dB for geophones
- Noise floor: 15ng/√Hz



## The clearest signal. The cleanest data.

Data quality is paramount in seismic surveys. Accel is equipped with Sercel's proprietary QuietSeis MEMS — the most advanced seismic sensor technology on the market.

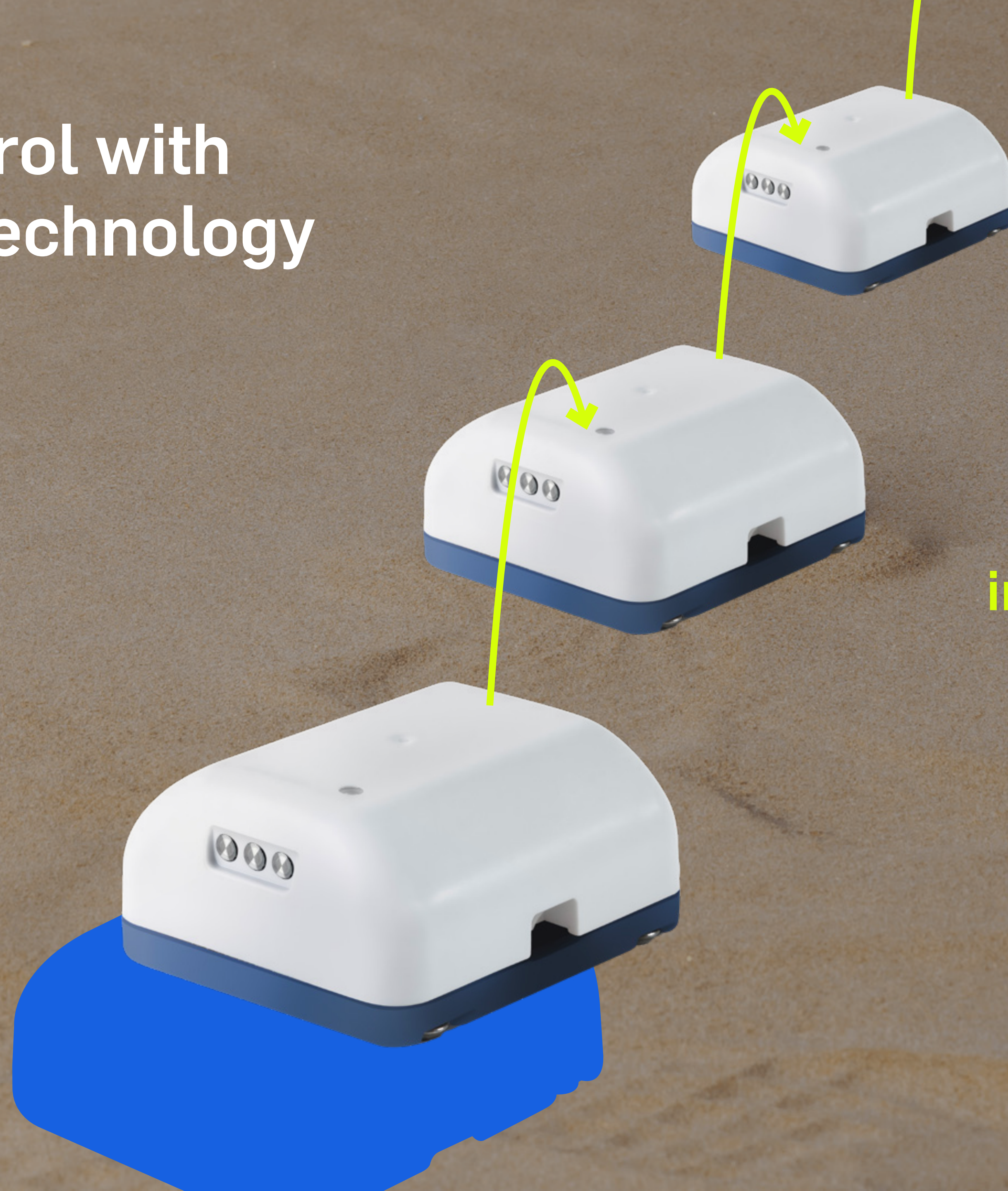


# Quality Control with Pathfinder Technology

Confidence at every step.

**40m**

nominal  
range



**Node QC status  
in near real-time**

The Pathfinder QC suite is integrated into Accel to ensure flawless deployment and QC data recovery without requiring any additional equipment, such as drones, extra antennas, etc.

# HSE & Environmental Impact

Built for safer, greener operations.

**Better for your crews.  
Better for the planet.**

Accel enables

**to divide by 2\***

Diesel consumption

CO<sub>2</sub> emissions

Water consumption



Accel's design directly contributes to Health, Safety, and Environmental (HSE) improvements in seismic acquisition:

- Fewer personnel needed in the field
- Smaller vehicles, less transport
- Drop deployment reduces bending/lifting injuries
- Smaller footprint, lower emissions

\*Based on internal simulations compared to the main competition

# Get ready



# Accel Business Packs

Accel is tailored to suit your operational needs.

## Discovery Pack

---

- Discover Accel
- Node system
- Smart Software Suite
- Adapted for short-term surveys

## Operations Pack

---

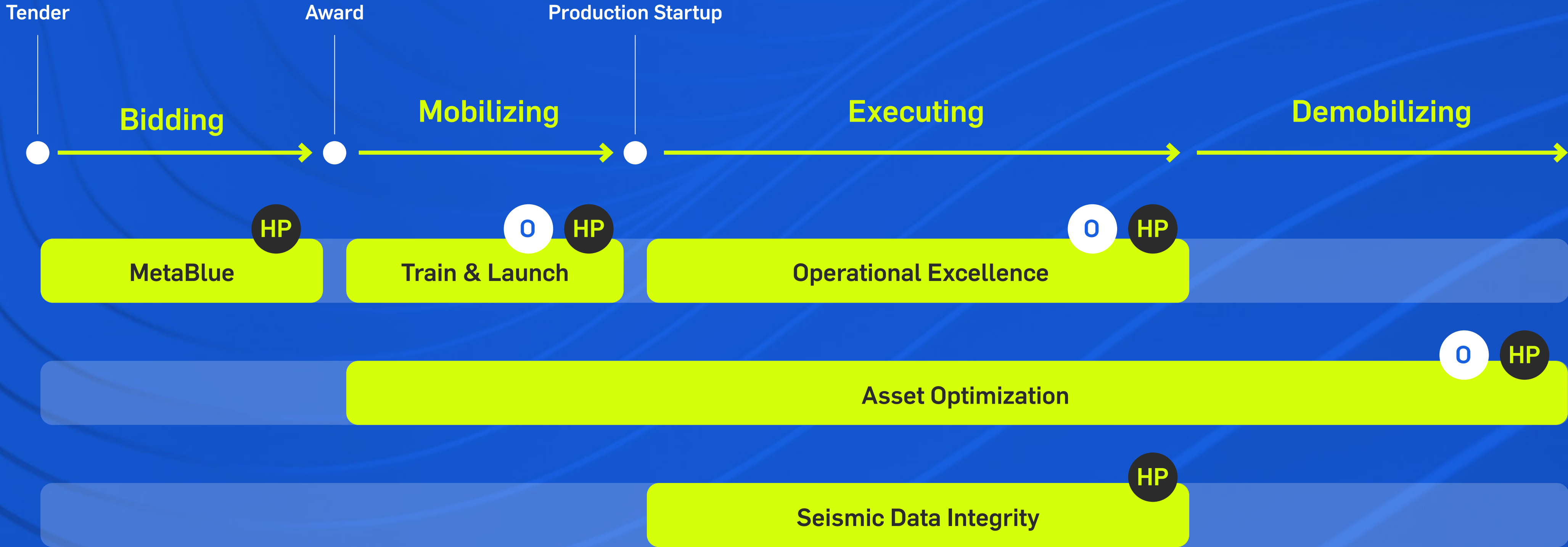
- Node system
- Smart Software Suite
- Train and Launch
- Operations Support

## High productivity Pack

---

- Node system
- Smart Software Suite
- MetaBlue consulting
- Train and Launch
- Operational Excellence
- Asset Optimization
- Seismic Data integrity

# Operations journey



**O** Operations Pack

**HP** High Productivity Pack

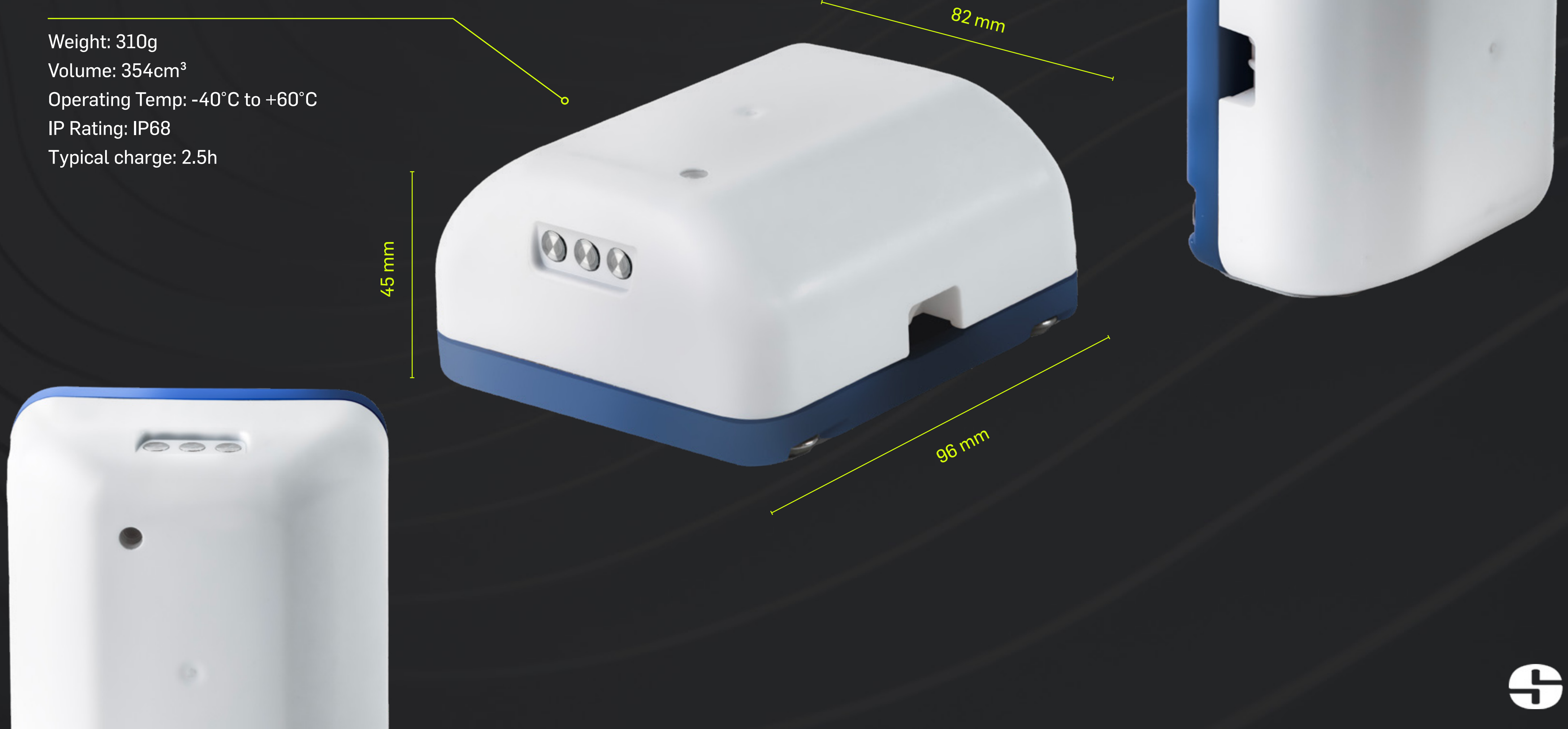
# Technology

& Specifications



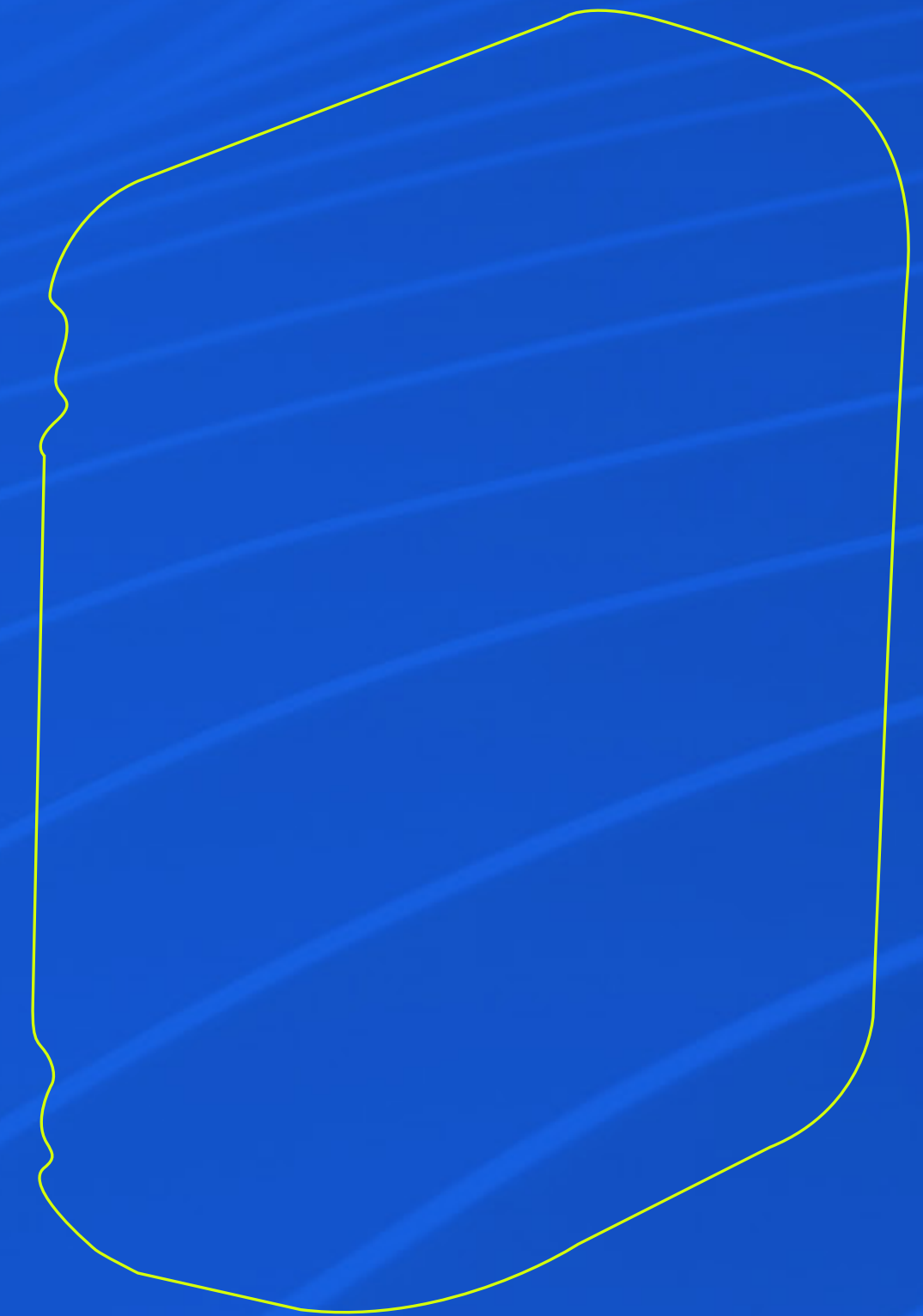
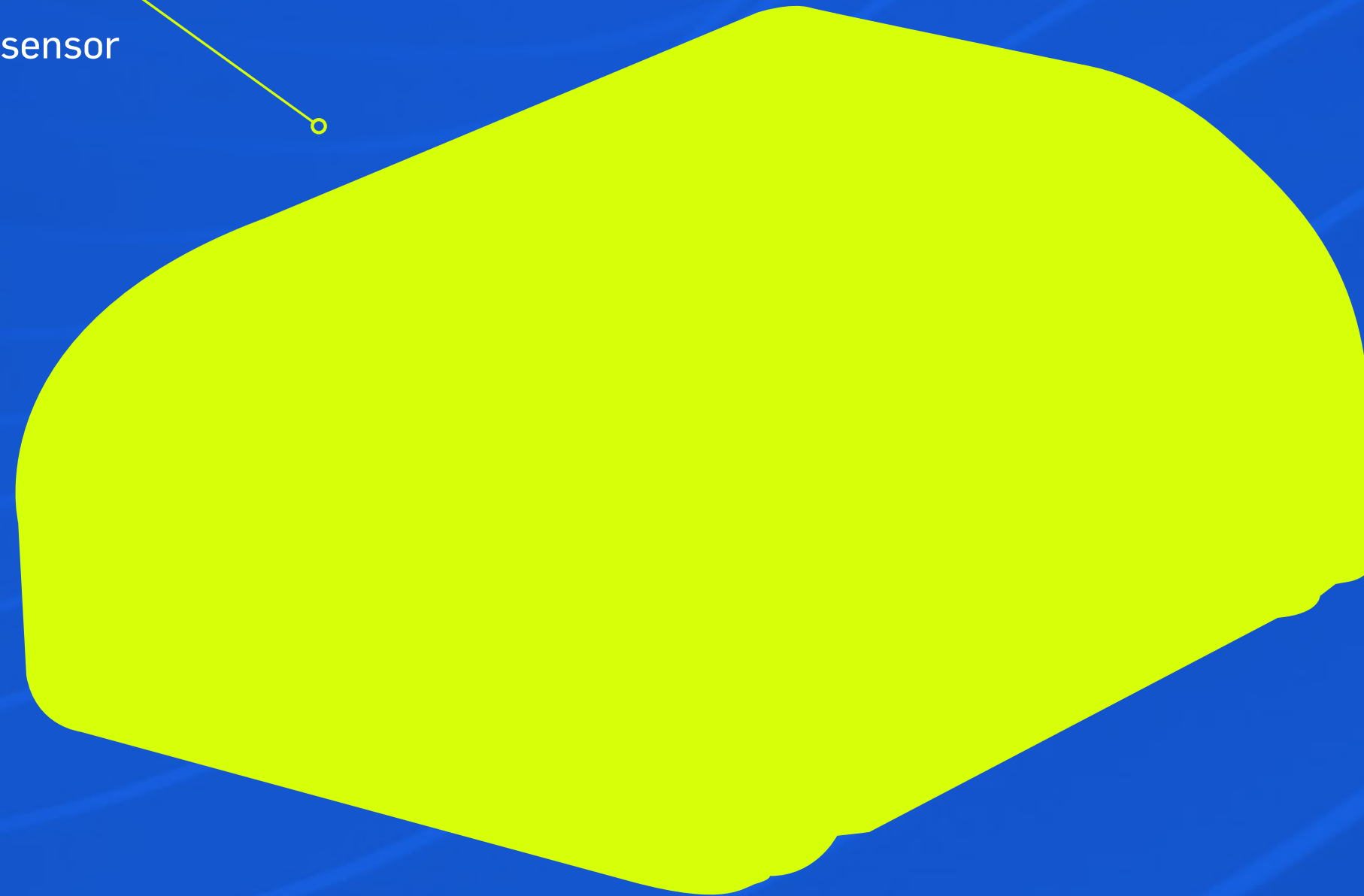
# Technical Specifications

Weight: 310g  
Volume: 354cm<sup>3</sup>  
Operating Temp: -40°C to +60°C  
IP Rating: IP68  
Typical charge: 2.5h



# Technical Specifications

Sensor: QuietSeis® MEMS broadband digital sensor  
Autonomy: 30 days (24/7)  
Storage: 60 days (24/7, 2ms)  
Sampling Rate: 0.5 – 4 ms  
Noise floor: 15 ng/√Hz

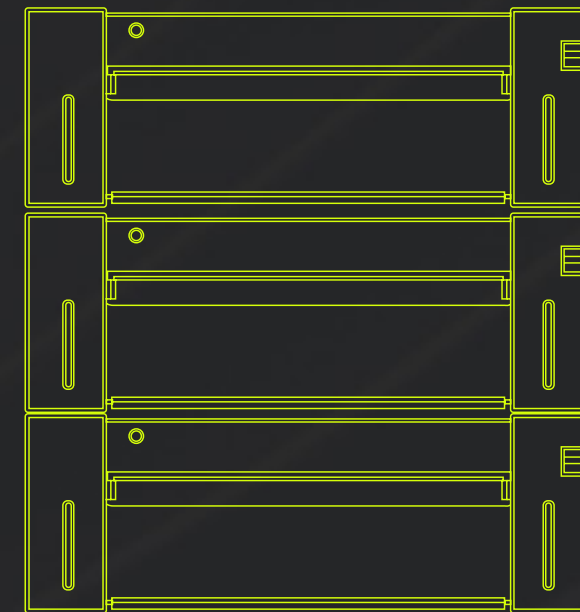
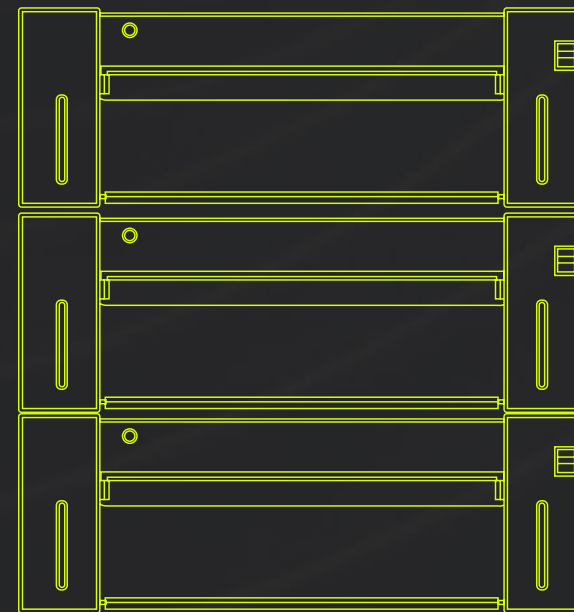


# Ecosystem

**Smart BackPack:** holds 36 nodes



**Stackable rack modules:**  
modular by 48



To **ease the deployment**, the Accel ecosystem contains an **Accel ergonomics package** that we call Smart Deployment System. It includes **Smart BackPacks**, new **Rack modules** and **Smart Baskets**.

# Ready to accelerate?

With Accel, Sercel sets a new standard for seismic node technology — combining cutting-edge design, data excellence, and operational simplicity into one powerful ecosystem.

Whether you're surveying deep in the desert, across remote tundra, or on any complex terrain, Accel empowers your teams to do more, faster, and smarter — with less.

- ▶ **Faster deployments**
- ▶ **Fewer resources**
- ▶ **Unrivalled data quality**
- ▶ **Scalable to your survey**



**Accel brings  
the future of seismic  
acquisition today.  
Let's move forward.**



to explore the Accel solution tailored to your project.

[www.sercel.com](http://www.sercel.com)

**Precision. Performance. Partnership.**

**This is the future we have in focus.**